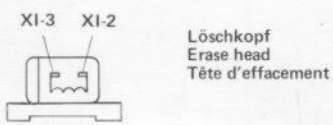
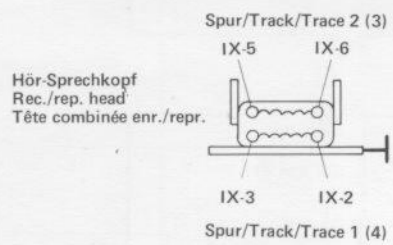


Von der Bestückungsseite gesehen
As seen from the top side
Vu du côté elements

Spannungen ohne Signal gemessen mit Instrument $> 50\ 000\ \Omega/V$
Voltages without signal measured with instrument $> 50\ 000\ \Omega/V$
Tensions sans signal mesurées avec instrument $> 50\ 000\ \Omega/V$



Transistoren von der Anschlußseite gesehen
Transistors as seen from the connecting side
Transistors vus du côté des connexions

Spannungen gemessen ohne Signal in Stellung: RECORD, START, Cr, DOLBY, LIMITER mit Digitalvoltmeter ($R_E > 1\ M\Omega$) gegen Masse.

Voltages measured without signal in position: RECORD, START, Cr, DOLBY, LIMITER with digital voltmeter ($R_E > 1\ M\Omega$) to ground.

Tensions sans signal mesurées en position: RECORD, START, Cr, DOLBY, LIMITER avec voltmètre numérique ($R_E > 1\ M\Omega$) contre masse.

- S 1 AW-Schalter
- S 2 AW-Schalter
- S 3 Fe/Cr-Schalter
- S 4 Fe-Schalter
- S 5 Cr-Schalter
- S 6 START-Schalter
- S 7 DOLBY NR-Schalter
- S 8 LIMITER-Schalter
- S 9 MIC-Schalter L
- S 10 MIC-Schalter R
- S 11 MONITOR-Schalter
- S 12 OSZILLATOR-Schalter

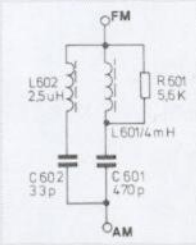
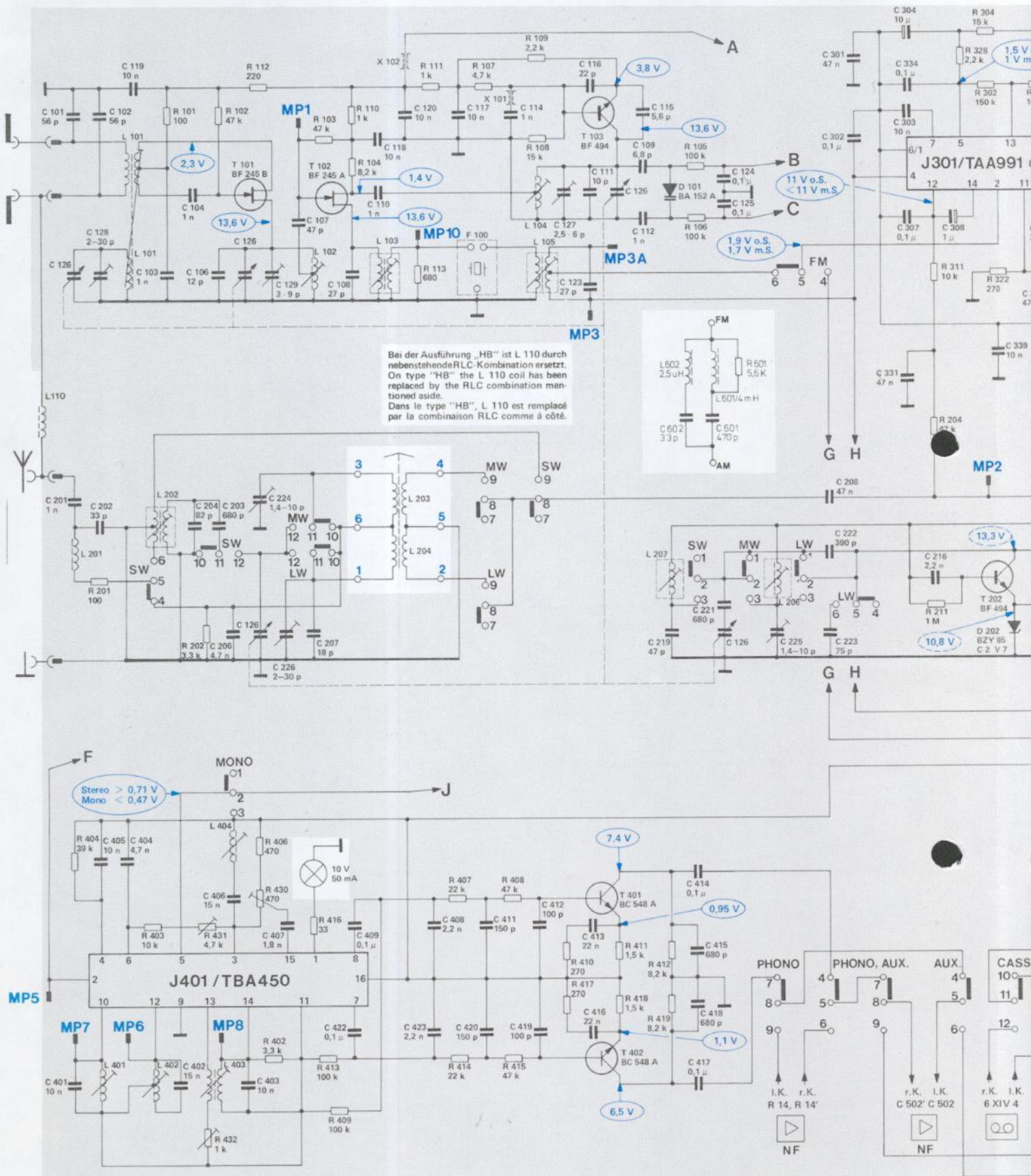
- S 1 REC./REP.-switch
- S 2 REC./REP.-switch
- S 3 Cr/Fe-switch
- S 4 Fe-switch
- S 5 Cr-switch
- S 6 START-switch
- S 7 DOLBY NR-switch
- S 8 LIMITER-switch
- S 9 MIC-switch left
- S 10 MIC-switch right
- S 11 MONITOR-switch
- S 12 OSZILLATOR-switch

- S 1 ENR./REP.-interrupteur
- S 2 ENR./REP.-interrupteur
- S 3 Cr/Fe-interrupteur
- S 4 Fe-interrupteur
- S 5 Cr-interrupteur
- S 6 START-interrupteur
- S 7 DOLBY NR-interrupteur
- S 8 LIMITER-interrupteur
- S 9 MIC-interrupteur L
- S 10 MIC-interrupteur R
- S 11 MONITOR-interrupteur
- S 12 OSZILLATOR-interrupteur

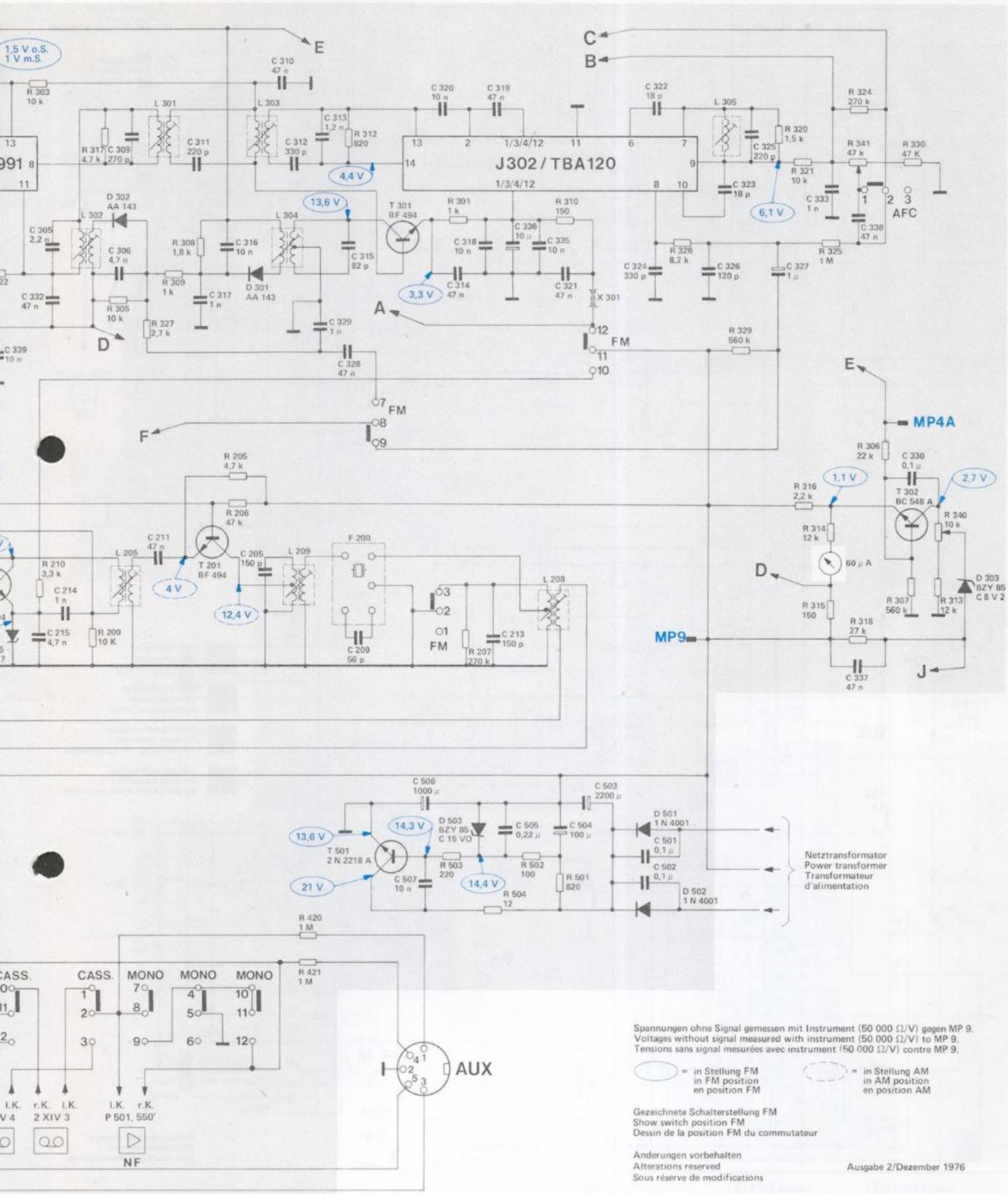
Gezeichnete Schalterstellung:
RECORD, SPUR 1 - 2, START, Cr, DOLBY, LIMITER, MIC L

Show switch position:
RECORD, TRACE 1 - 2, START, Cr, DOLBY, LIMITER, MIC L

Dessin de la position du commutateur:
RECORD, TRACE 1 - 2, START, Cr, DOLBY, LIMITER, MIC L



C	101, 126, 128, 102, 119, 103, 104, 106	126, 129, 107, 108	110, 118, 120	117	114	127, 123, 116, 111, 126, 109, 112, 115, 124, 125	301, 302, 304, 334, 307, 303, 308	339,
	201, 202	204, 203, 206, 126, 224, 226, 207	423, 408, 420, 411, 419, 412, 413, 416	219, 221, 126	414, 415, 418, 417	225	208, 222, 223, 331, 216	211, 204
R	401, 405, 404	402, 406, 403, 407, 422, 409						
	101	102, 112	103, 110, 104	111, 113, 107	109, 108	105, 106		311, 328, 304, 302
	201	202						211, 204
	404	403, 431, 432	406, 430, 402, 416, 413, 409	407, 414, 408, 415	410, 417, 411, 418, 412, 419			



Spannungen ohne Signal gemessen mit Instrument (50 000 Ω/V) gegen MP 9.
 Voltages without signal measured with instrument (50 000 Ω/V) to MP 9.
 Tensions sans signal mesurées avec instrument (50 000 Ω/V) contre MP 9.

○ = in Stellung FM
 in FM position
 en position FM

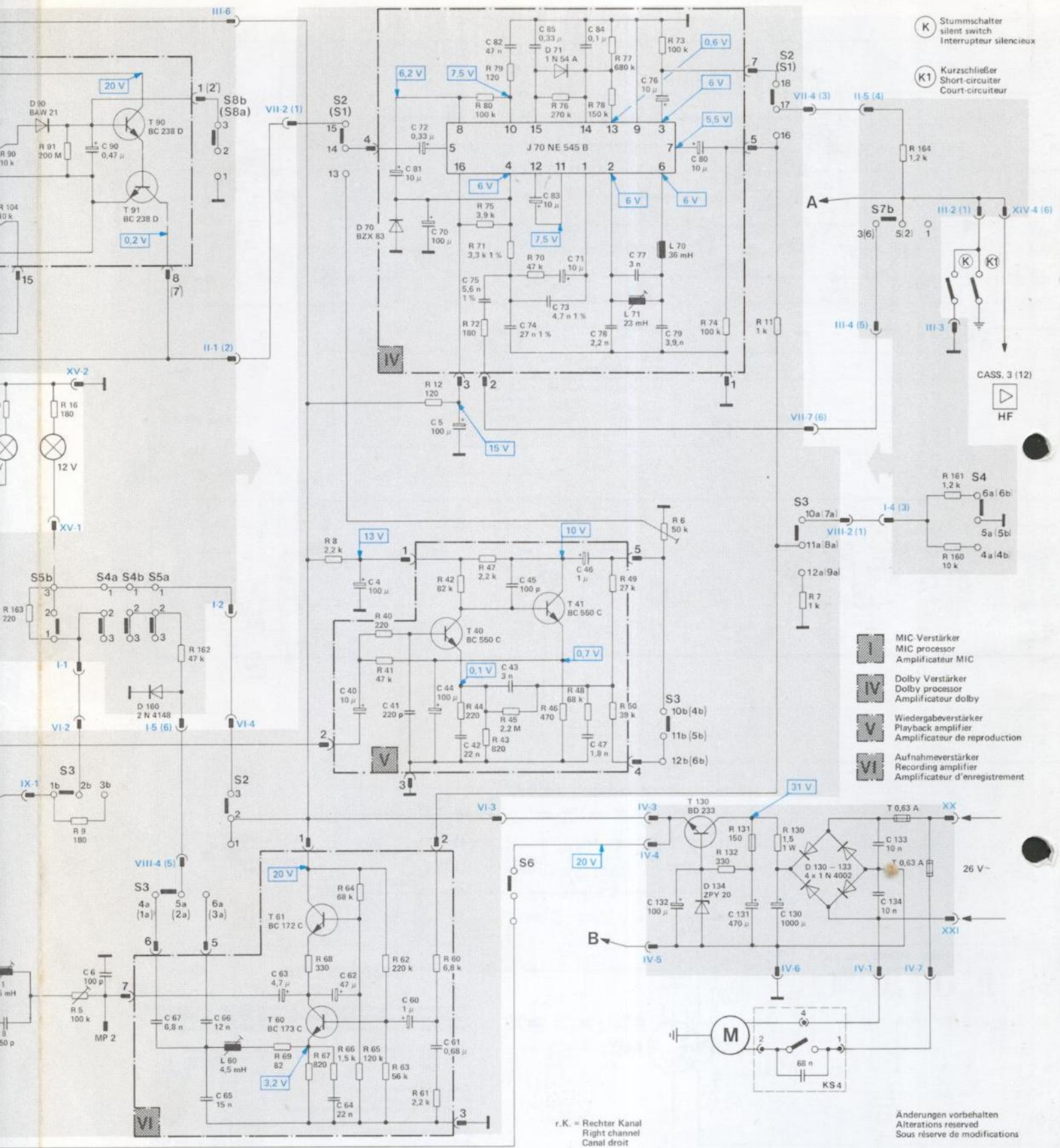
○ = in Stellung AM
 in AM position
 en position AM

Gezeichnete Schalterstellung FM
 Show switch position FM
 Dessin de la position FM du commutateur

Anderungen vorbehalten
 Alterations reserved
 Sous réserve de modifications

Ausgabe 2/Dezember 1976

339, 332, 305 215, 214	309, 306 211	311, 317, 316, 310, 312, 313, 329, 315, 328 209	320, 314, 318, 319, 336, 335, 321 213	324, 322	326, 323, 325, 327, 333	338 337	330
4, 302, 322, 303 210	317, 305 209	327, 309, 308	312	301	326	329	320, 321, 325, 324, 341, 330 316, 314, 315, 318, 306, 307, 340, 313
		205, 206	420, 421	207, 503, 504, 502, 501			



04, 19, 163, 16	91	162	8	64	40, 41	12	80, 75, 79	76	77	73	74	11	7	164	161	
	9, 5		69, 68, 67	66	65	62, 63	60, 61	43	45	46	48	49, 50	6	132	131	130
	90					81	72, 70	75	82	85, 73, 71, 84,	78	77	76	80		
						4	41	44	44	5, 42	74	83	46, 47			
	6	67	66, 65	63	62, 64	40	60	61		45, 43				132,	131	130
														133,	134	